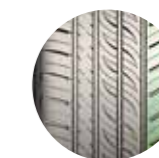




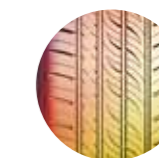
## GREEN PLUS

TIRE SIZE	LOAD INDEX/SPEED SYMBOL	STD. RIM (inch)	SECTION WIDTH (mm)	OVERALL DIAMETER (mm)	MAX LOAD (KGS)	MAX LOAD (lbs)	MAX PRESSURE (PKa)	MAX PRESSURE (PSI)	UTQG			
<b>13 inch'</b>												
155/65R13	73T	4.50B	157	532	365	805	300	44	480 AA	70	C	E
155/70R13	75T	4.50B	157	548	387	853	300	44	480 AA	70	C	E
155/80R13	79T	4.50B	157	578	437	963	300	44	480 AA	70	C	E
165/65R13	77T	5.00B	170	544	412	908	300	44	480 AA	70	C	E
165/70R13	79T	5.00B	170	562	437	963	300	44	480 AA	70	C	E
165/80R13	83T	4.50B	165	594	487	1074	300	44	480 AA	70	C	E
175/60R13	77H	5.00B	177	540	412	908	300	44	480 AA	70	C	E
175/70R13	82T	5.00B	177	576	475	1047	300	44	480 AA	70	C	E
185/70R13	86T	5.50B	189	590	530	1168	300	44	480 AA	70	C	C
<b>14 inch'</b>												
165/60R14	75H	5J	170	554	387	853	300	44	480 AA	70	C	E
165/65R14	79T	5J	170	570	437	963	300	44	480 AA	70	C	E
165/70R14	81T	5J	170	588	462	1019	300	44	480 AA	70	C	E
175/65R14	82T	5J	177	584	475	1047	300	44	480 AA	70	C	E
175/65R14	82H	5J	177	584	475	1047	300	44	480 AA	70	C	E
175/65R14	86T XL	5J	177	584	530	1168	340	50	480 AA	71	C	E
175/70R14	84T	5J	177	602	500	1102	300	44	480 AA	70	C	E
175/70R14	88T XL	5J	177	602	560	1235	340	50	480 AA	71	C	E
185/55R14	80H	6J	194	560	450	992	300	44	480 AA	70	C	E
185/60R14	82H	5.5J	189	578	475	1047	300	44	480 AA	70	C	E
185/60R14	82T	5.5J	189	578	475	1047	300	44	480 AA	70	B	E
185/65R14	86H	5.5J	189	596	530	1168	300	44	480 AA	70	C	C
185/70R14	88T	5.5J	189	616	560	1235	300	44	480 AA	70	C	C
185/70R14	88H	5.5J	189	616	560	1235	300	44	480 AA	70	C	C
195/60R14	86H	6J	201	590	530	1168	300	44	480 AA	71	C	C
195/70R14	91T	6J	201	630	615	1356	300	44	480 AA	71	C	C
195/70R14	91H	6J	201	630	615	1356	300	44	480 AA	71	C	C
205/60R14	88H	6	209	602	560	1235	300	44	480 AA	71	C	C
205/70R14	98T XL	6J	209	644	750	1653	340	50	480 AA	72	C	C

TIRE SIZE	LOAD INDEX/SPEED SYMBOL	STD. RIM (inch)	SECTION WIDTH (mm)	OVERALL DIAMETER (mm)	MAX LOAD (KGS)	MAX LOAD (lbs)	MAX PRESSURE (PKa)	MAX PRESSURE (PSI)	UTQG			
<b>15 inch'</b>												
175/65R15	84H	5J	177	609	500	1102	300	44	480 AA	70	C	E
185/55R15	82V	6J	194	585	475	1047	300	44	480 AA	70	C	C
185/60R15	84H	5.5J	189	603	500	1102	300	44	480 AA	70	C	C
185/60R15	88H XL	5.5J	189	603	560	1235	340	50	480 AA	71	C	C
185/65R15	88T	5.5J	189	621	560	1235	300	44	480 AA	71	C	C
185/65R15	88H	5.5J	189	621	560	1235	300	44	480 AA	70	C	C
185/65R15	92T XL	5.5J	189	621	630	1389	340	50	420 AA	71	C	C
195/50R15	82V	6J	201	577	475	1047	300	44	480 AA	70	C	C
195/55R15	85V	6J	201	595	515	1135	300	44	480 AA	71	C	C
195/60R15	88H	6J	201	615	560	1235	300	44	480 AA	71	C	C
195/60R15	88V	6J	201	615	560	1235	300	44	480 AA	71	C	C
195/65R15	91H	6J	201	635	615	1356	300	44	480 AA	71	C	C
195/65R15	91V	6J	201	635	615	1356	300	44	480 AA	71	C	C
205/60R15	91H	6J	209	627	615	1356	300	44	480 AA	71	C	C
205/60R15	91V	6J	209	627	615	1356	300	44	480 AA	72	C	C
205/65R15	94H	6J	209	647	670	1477	300	44	480 AA	71	C	C
205/65R15	94V	6J	209	647	670	1477	300	44	480 AA	71	C	C
205/70R15	96T	6J	209	669	710	1565	300	44	420 AA	71	C	C
215/60R15	94H	6.5J	221	639	670	1477	300	44	480 AA	71	C	C
215/65R15	96H	6.5J	221	661	710	1565	300	44	480 AA	71	C	C
215/65R15	100H XL	6.5J	221	661	800	1765	340	50	480 AA	72	C	C



Outside with wide ribs and closed shoulder for vehicle responsiveness and cornering performance. Inside with wide grooves and high sipe density for braking, acceleration and maximizing wet/snow evacuation.



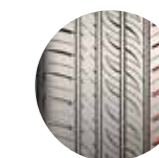
Jointless "0" degree spiral nylon cover and wide steel belts for high driving safety, comfort and durability.



Jointless mono strand bead wire and hard bead filler strengthen the link between tire and rim for precise driving experience.



High-grip silica tread compound delivers exceptional braking and handling in wet and dry conditions.



The walls of the outside rib carved with small channels to reduce driving noise.



5-variable pitch alignment for a quiet driving environment.





## GREEN PLUS

TIRE SIZE	LOAD INDEX/ SPEED SYMBOL	STD. RIM (inch)	SECTION WIDTH (mm)	OVERALL DIAMETER (mm)	MAX LOAD (KGS)	MAX PRESSURE (lbs)	UTQG	Icons
<b>16 inch'</b>								
185/50R16	81V	6J	194	592	462	1019	300 44 480 AA 71 B C	
195/45R16	84V XL	6.5J	195	582	500	1102	340 50 480 AA 72 B C	
195/55R16	87V	6J	201	620	545	1201	300 44 480 AA 71 C C	
195/55R16	91V XL	6J	201	620	615	1356	340 50 480 AA 72 C C	
195/55R16	91W XL	6J	201	620	615	1356	340 50 480 AA 72 C C	
205/45ZR16	87W XL	7J	206	590	545	1201	340 50 480 AA 72 B C	
205/50R16	87V	6.5J	214	612	545	1201	300 44 480 AA 71 C C	
205/50R16	87W	6.5J	214	612	545	1201	300 44 480 AA 71 C C	
205/50R16	91W XL	6.5J	214	612	615	1356	340 50 480 AA 72 C C	
205/55R16	91V	6.5J	214	632	615	1356	300 44 480 AA 71 C C	
205/55R16	91W	6.5J	214	632	615	1356	300 44 480 AA 71 C C	
205/55R16	94V XL	6.5J	214	632	670	1477	340 50 480 AA 72 C C	
205/55R16	94W XL	6.5J	214	632	670	1477	340 50 480 AA 72 C C	
205/60R16	92H	6J	209	652	630	1389	300 44 480 AA 71 C C	
205/60R16	92V	6J	209	652	630	1389	300 44 480 AA 71 C C	
205/60R16	96H XL	6J	209	652	710	1565	340 50 480 AA 72 C C	
215/55R16	93V	7J	226	642	650	1433	300 44 480 AA 71 C C	
215/55R16	97V XL	7J	226	642	730	1609	340 50 480 AA 72 C C	
215/55R16	97W XL	7J	226	642	730	1609	340 50 480 AA 72 C C	
215/60R16	95H	6.5J	221	664	690	1521	300 44 480 AA 71 C C	
215/60R16	99H XL	6.5J	221	664	775	1709	340 50 480 AA 72 C C	
215/60R16	99V XL	6.5J	221	664	775	1709	340 50 480 AA 72 C C	
225/55ZR16	99W XL	7J	233	654	775	1709	340 50 480 AA 72 C C	
225/50ZR16	96W XL	7J	233	632	710	1565	340 50 480 AA 72 B C	
225/60R16	98H	6.5J	228	676	750	1653	300 44 480 AA 71 C C	

TIRE SIZE	LOAD INDEX/ SPEED SYMBOL	STD. RIM (inch)	SECTION WIDTH (mm)	OVERALL DIAMETER (mm)	MAX LOAD (KGS)	MAX PRESSURE (lbs)	UTQG	Icons
<b>17 inch'</b>								
205/40ZR17	84W XL	7.5J	212	596	500	1102	340 50 480 AA 72 B C	
205/45ZR17	88W XL	7J	206	616	560	1235	340 50 480 AA 72 B C	
205/50ZR17	93W XL	6.5J	214	638	650	1433	340 50 480 AA 72 B C	
205/55ZR17	95W XL	6.5J	214	658	690	1521	340 50 480 AA 72 B C	
215/40ZR17	87W XL	7.5J	218	604	545	1201	340 50 480 AA 72 B C	
215/45ZR17	91W XL	7J	213	626	615	1356	340 50 480 AA 72 B C	
215/50ZR17	95W XL	7J	226	648	690	1521	340 50 480 AA 72 B C	
215/55ZR17	94W	7J	226	668	670	1477	300 44 480 AA 71 B C	
215/55ZR17	98W XL	7J	226	668	750	1653	340 50 480 AA 72 B C	
225/45ZR17	94W XL	7.5J	225	634	670	1477	340 50 480 AA 72 B C	
225/45ZR17	94Y XL	7.5J	225	634	670	1477	340 50 480 AA 72 B C	
225/50ZR17	98W XL	7J	233	658	750	1653	340 50 480 AA 72 B C	
225/55ZR17	101W XL	7J	233	680	825	1819	340 50 480 AA 72 B C	
235/45ZR17	97W XL	8J	236	644	730	1609	340 50 480 AA 72 B C	
235/55ZR17	103W XL	7.5J	245	690	875	1929	340 50 480 AA 72 B C	
245/40ZR17	95W XL	8.5J	248	628	690	1521	340 50 480 AA 72 B C	
245/45ZR17	99W XL	8J	243	652	775	1709	340 50 480 AA 72 B C	
<b>18 inch'</b>								
215/35ZR18	84W XL	7.5J	218	607	500	1102	340 50 480 AA 72 B C	
225/40ZR18	92W XL	8J	230	637	630	1389	340 50 480 AA 72 B C	
225/40ZR18	92Y XL	8J	230	637	630	1389	340 50 480 AA 72 B C	
225/45ZR18	95W XL	7.5J	225	659	690	1521	340 50 480 AA 72 B C	
235/40ZR18	95W XL	8.5J	241	645	690	1521	340 50 480 AA 72 B C	
235/45ZR18	98W XL	8J	236	669	750	1653	340 50 480 AA 72 B C	
235/45ZR18	94W	8J	236	669	670	1477	350 51 480 AA 71 B C	
235/50ZR18	97W	7.5J	245	693	730	1609	350 51 480 AA 71 B C	
245/40ZR18	97W XL	8.5J	248	653	730	1609	340 50 480 AA 72 B C	
245/45ZR18	100W XL	8J	243	677	800	1764	340 50 480 AA 72 B C	
255/45ZR18	103W XL	8.5J	255	687	875	1929	340 50 480 AA 73 B C	
<b>19 inch'</b>								
225/35ZR19	88W XL	8.0J	230	641	560	1235	340 50 480AA 72 B C	
235/35ZR19	91W XL	8.5J	241	647	615	1356	340 50 480AA 72 B C	
245/35ZR19	93W XL	8.5J	248	655	650	1433	340 50 480AA 72 B C	
265/30ZR19	93W XL	9.5J	271	643	650	1433	340 50 480AA 73 B C	
275/30ZR19	96W XL	9.5J	278	649	710	1565	340 50 480AA 73 B C	
<b>22 inch'</b>								
295/25ZR22	97W XL	10.5J	301	707	730	1609	340 50 480AA 75 B C	



Outside with wide ribs and closed shoulder for vehicle responsiveness and cornering performance. Inside with wide grooves and high sipe density for braking, acceleration and maximizing wet/snow evacuation.



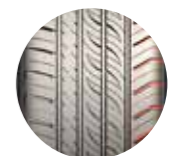
Jointless "0" degree spiral nylon cover and wide steel belts for high driving safety, comfort and durability.



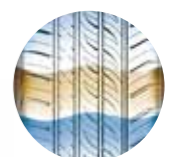
Jointless mono strand bead wire and hard bead filler strengthen the link between tire and rim for precise driving experience.



High-grip silica tread compound delivers exceptional braking and handling in wet and dry conditions.



The walls of the outside rib carved with small channels to reduce driving noise.



5-variable pitch alignment for a quiet driving environment.





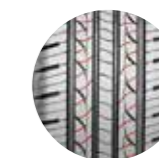
## GENESYS XP1

TIRE SIZE	LOAD INDEX/ SPEED SYMBOL	STD. RIM (inch)	SECTION WIDTH (mm)	OVERALL DIAMETER (mm)	MAX LOAD (KGS)	MAX PRESSURE (lbs)	MAX PRESSURE (PKa)	MAX PRESSURE (PSI)	UTQG	
<b>13 inch'</b>										
155/65R13	73T/S	4.50B	157	532	365	805	300	44	420AA	70 C E
155/70R13	75T	4.50B	157	548	387	853	300	44	420AA	70 C E
155/80R13	79T	4.50B	157	578	437	963	300	44	420AA	70 C E
165/65R13	77T	5.00B	170	544	412	908	300	44	420AA	70 C E
165/70R13	79T	5.00B	170	562	437	963	300	44	420AA	70 C E
165/80R13	83T	4.50B	165	594	487	1074	300	44	420AA	70 C E
175/60R13	77H	5.00B	177	540	412	908	300	44	420AA	70 C E
175/70R13	82T	5.00B	177	576	475	1047	300	44	420AA	70 C E
185/70R13	86T	5.50B	189	590	530	1168	300	44	420AA	70 C E
<b>14 inch'</b>										
155/65R14	75S/T	4.5J	157	558	387	853	300	44	420AA	70 C E
165/60R14	75H	5J	170	554	387	853	300	44	420 AA	70 C E
165/65R14	79T	5J	170	570	437	963	300	44	420 AA	70 C E
165/70R14	81T	5J	170	588	462	1019	300	44	420 AA	70 C E
175/65R14	82H	5J	177	584	475	1047	300	44	420 AA	70 C E
175/65R14	82T	5J	177	584	475	1047	300	44	420 AA	70 C E
175/65R14	86T XL	5J	177	584	530	1168	340	50	420 AA	71 C E
175/70R14	84T	5J	177	602	500	1102	300	44	420 AA	70 C E
175/70R14	88T XL	5J	177	602	560	1235	340	50	420 AA	71 C E
185/55R14	80H	6J	194	560	450	992	300	44	420 AA	70 C C
185/60R14	82H	5.5J	189	578	475	1047	300	44	420 AA	70 C C
185/65R14	86H	5.5J	189	596	530	1168	300	44	420 AA	70 C C
185/70R14	88T	5.5J	189	616	560	1235	300	44	420 AA	70 C C
185/70R14	88H	5.5J	189	616	560	1235	300	44	420 AA	70 C C
195/60R14	86H	6J	201	590	530	1168	300	44	420 AA	71 C C
195/70R14	91T	6J	201	630	615	1356	300	44	420 AA	71 C C
195/70R14	91H	6J	201	630	615	1356	300	44	420 AA	71 C C
205/60R14	88H	6J	209	602	560	1235	300	44	420 AA	71 C C
205/70R14	98T XL	6J	209	644	750	1653	340	50	420 AA	72 C C
205/75R14 (WSW)	95H	5.5J	203	664	690	1521	300	44	420 AA	71 C C
<b>15 inch'</b>										
175/65R15	84H	5J	177	609	500	1102	300	44	420 AA	70 C E
185/55R15	82V	6J	194	585	475	1047	300	44	420 AA	70 C C
185/60R15	84H	5.5J	189	603	500	1102	300	44	420 AA	70 C C
185/60R15	88H XL	5.5J	189	603	560	1235	340	50	420 AA	71 C C
185/65R15	88H	5.5J	189	621	560	1235	300	44	420 AA	70 C C
185/65R15	88T	5.5J	189	621	560	1235	300	44	420 AA	70 C C
185/65R15	92T XL	5.5J	189	621	630	1389	340	50	420 AA	71 C C
195/50R15	82V	6J	201	577	475	1047	300	44	420 AA	71 C C
195/55R15	85V	6J	201	595	515	1135	300	44	420 AA	71 C C

TIRE SIZE	LOAD INDEX/ SPEED SYMBOL	STD. RIM (inch)	SECTION WIDTH (mm)	OVERALL DIAMETER (mm)	MAX LOAD (KGS)	MAX PRESSURE (lbs)	MAX PRESSURE (PKa)	MAX PRESSURE (PSI)	UTQG	
<b>15 inch</b>										
195/60R15	88H	6J	201	615	560	1235	300	44	420 AA	71 C C
195/60R15	88V	6J	201	615	560	1235	300	44	420 AA	71 C C
195/65R15	91H	6J	201	635	615	1356	300	44	420 AA	71 C C
195/65R15	91V	6J	201	635	615	1356	300	44	420 AA	71 C C
195/65R15	95H XL	6J	201	635	690	1521	340	50	420 AA	72 C C
205/60R15	91H	6J	209	627	615	1356	300	44	420 AA	71 C C
205/60R15	91V	6J	209	627	615	1356	300	44	420 AA	71 C C
205/65R15	94H	6J	209	647	670	1477	300	44	420 AA	71 C C
205/65R15	94V	6J	209	647	670	1477	300	44	420 AA	71 C C
205/70R15	96T	6J	209	669	710	1565	300	44	420 AA	71 C C
205/70R15 (WSW)	96T	6J	209	669	710	1565	300	44	420 AA	71 C C
215/60R15	94H	6.5J	221	639	670	1477	300	44	420 AA	71 C C
215/65R15	96H	6.5J	221	661	710	1565	300	44	420 AA	71 C C
215/65R15	100H XL	6.5J	221	661	800	1765	340	50	420 AA	72 C C
215/70R15	98T	6.5J	221	683	750	1653	300	44	420 AA	71 C C
215/70R15 (WSW)	98T	6.5J	221	683	750	1653	300	44	420 AA	71 C C
<b>16 inch'</b>										
195/50R16	88V XL	6J	201	602	560	1235	340	50	420 AA	72 C E
195/55R16	87V	6J	201	620	545	1201	300	44	420 AA	71 C C
195/55R16	91V XL	6J	201	620	615	1356	340	50	420 AA	72 C C
195/55R16	91W XL	6J	201	620	615	1356	340	50	420 AA	72 C C
195/60R16	89V	6J	201	640	580	1279	300	44	420 AA	71 C E
205/50R16	87V	6.5J	214	612	545	1201	300	44	420 AA	71 C C
205/50R16	87W	6.5J	214	612	545	1201	300	44	420 AA	71 C C
205/50R16	91W XL	6.5J	214	612	615	1356	340	50	420 AA	72 C C
205/55R16	91V	6.5J	214	632	615	1356	300	44	420 AA	71 C C
205/55R16	91W	6.5J	214	632	615	1356	300	44	420 AA	71 C C
205/55R16	94V XL	6.5J	214	632	670	1477	340	50	420 AA	72 C C
205/55R16	94W XL	6.5J	214	632	670	1477	340	50	420 AA	72 C C
205/60R16	92H	6J	209	652	630	1389	300	44	420 AA	71 C C
205/60R16	92V	6J	209	652	630	1389	300	44	420 AA	71 C C
205/60R16	96H XL	6J	209	652	710	1565	340	50	420 AA	72 C C
205/65R16	95H	6J	209	672	690	1521	300	44	420 AA	71 C C
215/55R16	93V	7J	226	642	650	1433	300	44	420 AA	71 C C
215/55R16	97V XL	7J	226	642	730	1609	340	50	420 AA	72 C C
215/55R16	97W XL	7J	226	642	730	1609	340	50	420 AA	72 C C
215/60R16	95H	6.5J	221	664	690	1521	300	44	420 AA	71 C C
215/60R16	99H XL	6.5J	221	664	775	1709	340	50	420 AA	72 C C
215/60R16	99V XL	6.5J	221	664	775	1709	340	50	420 AA	72 C C
225/55R16	99W XL	7J	233	654	775	1709	340	50	420 AA	72 C C
225/60R16	98H	6.5J	228	676	750	1653	300	44	420 AA	71 C C



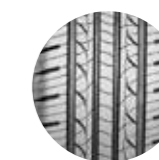
Technology used to reduce tyre noise.



Finely-divided tread pattern, corresponding to each division of the steel, ensures fantastic road grip performance in wet conditions and improves driving safety.



Four linear grooves ensures superior draining performance



Silicon formula optimizes tread stiffness, giving excellent wear and lowers rolling resistance.



Optimizing combination of tread construction, pattern and rubber effectively reduces fuel consumption.



The cut resistant tread reduces the possibility of irregular tread wear.





TIRE SIZE	LOAD INDEX/ SPEED SYMBOL	STD. RIM (inch)	SECTION WIDTH (mm)	OVERALL DIAMETER (mm)	MAX LOAD (KGS) (lbs)	MAX PRESSURE KPa PSI	UTQG			
<b>16 inch'</b>										
205/55R16	94V XL	6.5J	214	632	670 1477	340 50	420AA	70	B	C

TIRE SIZE	LOAD INDEX/ SPEED SYMBOL	STD. RIM (inch)	SECTION WIDTH (mm)	OVERALL DIAMETER (mm)	MAX LOAD (KGS) (lbs)	MAX PRESSURE KPa (PSI)	UTQG			
<b>16 inch</b>										
205/55ZRF16	91W	6.5J	214	632 615	1356 300	44	480AA	71	B	E
<b>17 inch'</b>										
205/55ZRF17	91W	6.5J	214	658 615	1356 300	44	480AA	71	B	E
225/45ZRF17	94W XL	7.5J	225	634 670	1477 340	50	480AA	72	B	E
225/45ZRF17	91W	7.5J	225	634 615	1356 300	44	480AA	71	B	E
225/50ZRF17	94W	7J	233	658 670	1477 300	44	480AA	71	B	E
225/55ZRF17	97W	7J	233	680 730	1609 300	44	480AA	71	B	E

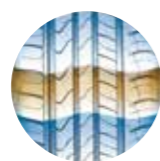


**GREEN XP2**

**SAFETY XF8**



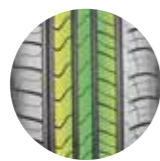
Multi-arc tread design provides superior manoeuvrability.



Technology used to reduce tyre noise.



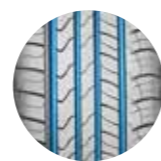
Silicon formula improves road grip.



Decreased tread block rigidity efficiently reduces the noise between the tread and the road surface to increase driving comfort.



Big block pattern design improves tyre rigidity.



Four longitudinal grooves and wide draining design provide brilliant drainage performance and manoeuvrability.



No more delays or being stranded on remote highways due to a flat tire.



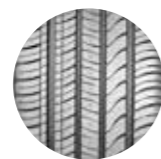
Helps to avoid accidents caused by the loss of control from punctures or air leaks, increasing



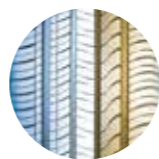


**VANTAGE XU1**

TIRE SIZE	LOAD INDEX/SPEED SYMBOL	STD. RIM (inch)	SECTION WIDTH (mm)	OVERALL DIAMETER (mm)	MAX LOAD (KGS)	MAX LOAD (lbs)	MAX PRESSURE (PKa)	MAX PRESSURE (PSI)	UTQG	
<b>16 inch'</b>										
185/50R16	81V	6J	194	592	462	1019	300	44	480AA 70	B C
195/45R16	84V XL	6.5J	195	582	500	1102	340	50	480AA 72	B C
205/45ZR16	87W XL	7J	206	590	545	1201	340	50	480AA 72	B C
225/50ZR16	96W XL	7J	233	632	710	1565	340	50	480AA 72	B C
<b>17 inch'</b>										
205/40ZR17	84W XL	7.5J	212	596	500	1102	340	50	480AA 72	B C
205/45ZR17	88W XL	7J	206	616	560	1235	340	50	480AA 72	B C
205/50ZR17	93W XL	6.5J	214	638	650	1433	340	50	480AA 72	B C
205/55ZR17	95W XL	6.5J	214	658	690	1521	340	50	480AA 72	B C
215/40ZR17	87W XL	7.5J	218	604	545	1201	340	50	480AA 72	B C
215/45ZR17	91W XL	7J	213	626	615	1356	340	50	480AA 72	B C
215/50ZR17	95W XL	7J	226	648	690	1521	340	50	480AA 72	B C
215/55ZR17	94W	7J	226	668	670	1477	300	44	480AA 71	B C
215/55R17	98W XL	7J	226	668	750	1653	340	50	480AA 72	B C
225/45ZR17	94W XL	7.5J	225	634	670	1477	340	50	480AA 72	B C
225/45ZR17	94 Y XL	7.5J	225	634	670	1477	340	50	480AA 72	B C
225/50ZR17	98W XL	7J	233	658	750	1653	340	50	480AA 72	B C
225/55ZR17	101W XL	7J	233	680	825	1819	340	50	480AA 72	B C
235/45ZR17	97W XL	8J	236	644	730	1609	340	50	480AA 72	B C
235/50R17	100W XL	7.5J	245	668	800	1764	340	50	480AA 72	B C
235/55ZR17	103W XL	7.5J	245	690	875	1929	340	50	480AA 72	B C
245/40ZR17	95W XL	8.5J	248	628	690	1521	340	50	480AA 72	B C
245/45ZR17	99W XL	8J	243	652	775	1709	340	50	480AA 72	B C



Unique carbon polymer composite efficiently improves the traction capability and reduces the rolling resistance.

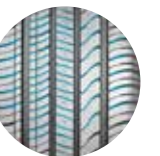


Asymmetric tread design with tiny internal pattern for better road grip and external big block for maximizing ground contact.

TIRE SIZE	LOAD INDEX/SPEED SYMBOL	STD. RIM (inch)	SECTION WIDTH (mm)	OVERALL DIAMETER (mm)	MAX LOAD (KGS)	MAX LOAD (lbs)	MAX PRESSURE (PKa)	MAX PRESSURE (PSI)	UTQG	
<b>18 inch'</b>										
215/35ZR18	84W XL	7.5J	218	607	500	1102	340	50	480 AA 72	B C
215/45R18	93W XL	7J	213	651	650	1433	340	50	480AA 72	B C
225/40ZR18	92W XL	8J	230	637	630	1389	340	50	480 AA 72	B C
225/40ZR18	92 Y XL	8J	230	637	630	1389	340	50	480 AA 72	B C
225/45ZR18	95W XL	7.5J	225	659	690	1521	340	50	480 AA 72	B C
225/50R18	95W	7J	233	683	690	1521	300	44	480AA 71	B C
235/40ZR18	95W XL	8.5J	241	645	690	1521	340	50	480 AA 72	B C
235/45ZR18	94W	8J	236	669	670	1477	350	51	480 AA 71	B C
235/45ZR18	98W XL	8J	236	669	750	1653	340	50	480 AA 72	B C
235/45ZR18	98 Y XL	8J	236	669	750	1653	340	50	480 AA 72	B C
235/50ZR18	97W	7.5J	245	693	730	1609	350	51	480 AA 71	B C
245/40ZR18	97W XL	8.5J	248	653	730	1609	340	50	480 AA 72	B C
245/45ZR18	100W XL	8J	243	677	800	1764	340	50	480 AA 72	B C
245/50R18	104W XL	7.5J	253	703	900	1984	340	50	480AA 72	B C
255/45ZR18	103W XL	8.5J	255	687	875	1929	340	50	480 AA 73	B C
<b>19 inch'</b>										
225/35ZR19	88W XL	8J	230	641	560	1235	340	50	480 AA 72	B C
225/55R19	103V XL	7J	233	731	875	1929	340	50	480AA 72	B C
235/35ZR19	91W XL	8.5J	241	647	615	1356	340	50	480AA 72	B C
235/50ZR19	103W XL	7.5J	245	719	875	1929	340	50	480AA 72	B C
245/35ZR19	93W XL	8.5J	248	655	650	1433	340	50	480AA 72	B C
245/40ZR19	98W XL	8.5J	248	679	750	1653	340	50	480AA 72	B C
245/45ZR19	102W XL	8J	243	703	850	1874	340	50	480AA 72	B C
255/40ZR19	100Y/W XL	9J	260	687	800	1764	340	50	480AA 73	B C
255/45ZR19	104Y/W XL	8.5J	255	713	900	1984	340	50	480AA 73	B C
265/30ZR19	93W XL	9.5J	271	643	650	1433	340	50	480AA 73	B C
275/30ZR19	96W XL	9.5J	278	649	710	1565	340	50	480AA 73	B C
275/35ZR19	100Y/W XL	9.5J	278	675	800	1764	340	50	480AA 73	B C
275/40ZR19	105Y XL	9.5J	278	703	925	2039	340	50	480AA 73	B C
<b>20 inch'</b>										
245/30ZR20	90W XL	8.5J	248	656	600	1323	340	50	480AA 72	B C
245/35ZR20	95W XL	8.5J	248	680	690	1521	340	50	480 AA 72	B C
245/45ZR20	103Y XL	8J	243	728	875	1929	340	50	480AA 72	B C
<b>21 inch'</b>										
295/40ZR21	111Y XL	10.5J	301	769	1090	2403	340	50	480AA 75	B C
<b>22 inch'</b>										
295/25ZR22	97W XL	10.5	301	707	730	1609	340	50	480AA 75	B C



Special tread design brings greater lateral rigidity and longitudinal flexibility



The optimal distribution of the tread pattern blocks and grooves achieves optimum balance of control, giving low noise and driving comfort.



Long mileage and driving comfort





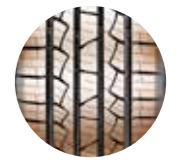
**SPORT XV1**

TIRE SIZE	LOAD INDEX/ SPEED SYMBOL	STD. RIM (inch)	SECTION WIDTH (mm)	OVERALL DIAMETER (mm)	MAX LOAD		MAX PRESSURE		UTQG			
15 inch'												
205/75R15 (wsw)	97H	5.5J	203	689	730	1609	300	44	520 AA	71	B	C
205/75R15	97H	5.5J	203	689	730	1609	300	44	520 AA	71	B	C
215/75R15 (wsw)	100H	6J	216	703	800	1764	300	44	520 AA	71	B	C
215/75R15 (wl)	100H	6J	216	703	800	1764	300	44	520 AA	71	B	C
215/75R15	100H	6J	216	703	800	1764	300	44	520 AA	71	B	C
225/70R15	100H	6.5J	228	697	800	1764	300	44	520 AA	71	B	C
225/70R15 (wsw)	100H	6.5J	228	697	800	1764	300	44	520 AA	71	B	C
225/75R15 (wsw)	102H	6J	223	719	850	1874	300	44	520 AA	71	B	C
225/75R15	102H	6J	223	719	850	1874	300	44	520 AA	71	B	C
225/75R15 (wl)	102H	6J	223	719	850	1874	300	44	520 AA	71	B	C
235/75R15	105H	6.5J	235	733	925	2039	300	44	520 AA	71	B	C
235/75R15 (wsw)	105H	6.5J	235	733	925	2039	300	44	520 AA	71	B	C
255/70R15	108H	7.5J	260	739	1000	2205	350	51	520 AA	72	B	C
265/70R15	112H	8J	272	753	1120	2469	350	51	520 AA	72	B	C
16 inch'												
205/65R16	95H	6J	209	672	690	1521	300	44	520AA	71	B	C
215/65R16	98H	6.5J	221	686	750	1653	300	44	520 AA	71	B	C
215/70R16	100H	6.5J	221	708	800	1764	350	51	520 AA	71	B	C
225/70R16	103H	6.5J	228	722	875	1929	350	51	520 AA	71	B	C
235/60R16	100H	7J	240	688	800	1764	300	44	520 AA	71	B	C
235/65R16	103H	7J	240	712	875	1929	300	44	520 AA	71	B	C
235/70R16	106H	7J	240	736	950	2094	350	51	520 AA	71	B	C
245/70R16	107H	7J	248	750	975	2149	350	51	520 AA	71	B	C
245/75R16	111H	7J	248	774	1090	2403	350	51	520 AA	71	B	C
255/65R16	109H	7.5J	260	738	1030	2271	300	44	520 AA	72	B	C
255/70R16	111H	7.5J	260	764	1090	2403	350	51	520 AA	72	B	C
265/70R16	112H	8J	272	778	1120	2469	350	51	520 AA	72	B	C
265/70R16	115H XL	8J	272	778	1215	2679	340	50	520 AA	73	B	C
265/75R16	116H	7.5J	267	804	1250	2756	350	51	520 AA	72	B	C
275/70R16	114H	8J	279	792	1180	2601	350	51	520 AA	72	B	C
20 inch'												
245/50R20	102V	7.5J	253	754	850	1874	350	51	520AA	71	B	C
275/40ZR20	106Y XL	9.5J	278	728	950	2094	340	50	520AA	73	B	C
275/45ZR20	110Y XL	9J	273	756	1060	2337	340	50	520AA	73	B	C
285/50R20	116V XL	9J	297	794	1250	2756	340	50	520AA	75	B	C
21 inch'												
275/45R21	110Y XL	9J	273	781	1060	2337	340	50	520AA	73	B	C

TIRE SIZE	LOAD INDEX/ SPEED SYMBOL	STD. RIM (inch)	SECTION WIDTH (mm)	OVERALL DIAMETER (mm)	MAX LOAD		MAX PRESSURE		UTQG			
17 inch'												
215/60R17	96H	6.5J	221	690	710	1565	300	44	520 AA	71	B	C
215/65R17	99H	6.5J	221	712	775	1709	300	44	520 AA	71	B	C
225/60R17	99H	6.5J	228	702	775	1709	300	44	520 AA	71	B	C
225/65R17	102H	6.5J	228	724	850	1874	300	44	520 AA	71	B	C
225/70R17	108H XL	6.5J	228	748	1000	2205	340	50	520 AA	72	B	C
235/60R17	102H	7J	240	714	850	1874	300	44	520 AA	71	B	C
235/65R17	104H	7J	240	738	900	1984	350	51	520 AA	71	B	C
235/70R17	109H XL	7J	240	762	1030	2271	340	50	520 AA	72	B	C
245/65R17	107H	7J	248	750	975	2149	350	51	520 AA	71	B	C
245/70R17	110H	7J	248	776	1060	2337	350	51	520 AA	71	B	C
255/60R17	106H	7.5J	260	738	950	2094	350	51	520 AA	72	B	C
255/65R17	110H	7.5J	260	764	1060	2337	350	51	520 AA	72	B	C
265/65R17	112H	8J	272	776	1120	2469	350	51	520 AA	72	B	C
265/70R17	115H	8J	272	804	1215	2679	350	51	520 AA	72	B	C
18 inch'												
215/55R18	99W XL	7J	226	693	775	1709	340	50	520 AA	72	B	C
225/55R18	102W XL	7J	233	705	850	1874	340	50	520 AA	72	B	C
225/60R18	100H	6.5J	228	727	800	1764	300	44	520 AA	71	B	C
225/60R18	100V	6.5J	228	727	800	1764	300	44	520 AA	71	B	C
235/55R18	104W XL	7.5J	245	715	900	1984	340	50	520 AA	72	B	C
235/60R18	107H XL	7J	240	739	975	2149	340	50	520 AA	72	B	C
235/60R18	107V XL	7J	240	739	975	2149	340	50	520 AA	72	B	C
235/65R18	110H XL	7J	240	763	1060	2337	340	50	520 AA	72	B	C
245/60R18	105H	7J	248	751	925	2039	350	51	520 AA	71	B	C
255/55R18	109V XL	8J	265	737	1030	2271	340	50	520 AA	73	B	C
255/55R18	109W XL	8J	265	737	1030	2271	340	50	520 AA	73	B	C
255/60R18	112H XL	7.5J	260	763	1120	2469	340	50	520 AA	73	B	C
255/60R18	112V XL	7.5J	260	763	1120	2469	340	50	520 AA	73	B	C
265/60R18	110H	8J	272	775	1060	2337	350	51	520 AA	72	B	C
285/60R18	116H	8.5J	292	799	1250	2756	300	44	520 AA	74	B	C
19 inch'												
235/55R19	105V XL	7.5J	245	741	925	2039	340	50	520 AA	72	B	C
245/55R19	103V	7.5J	253	753	875	1929	350	51	520 AA	71	B	C
255/50R19	107W XL	8J	265	739	975	2149	340	50	520 AA	73	B	C
255/50R19	107Y XL	8J	265	739	975	2149	340	50	520 AA	73	B	C
255/55R19	111V XL	8J	265	763	1090	2403	340	50	520 AA	73	B	C
265/50R19	110W XL	8.5J	277	749	1060	2337	340	50	520 AA	73	B	C



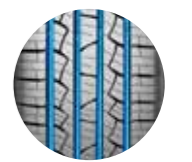
Unique carbon polymer composite efficiently improve the traction capability and reduces the rolling resistance.



Optimized pitch arrangement and tread profile reduces noise



High density longitudinal and lateral zigzag pattern design ensures close connection between tire tread and road surface to increase lateral rigidity



Four longitudinal grooves and a wide contact area provide outstanding drainage performance and manoeuvrability





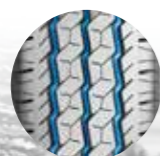
**BRAWN XC1**

TIRE SIZE	PR	LOAD INDEX/ SPEED SYMBOL	STD. RIM (inch)	SECTION WIDTH (mm)	OVERALL DIAMETER (mm)	MAX LOAD (KGS)	MAX LOAD (lbs)	MAX PRESSURE (PKa)	MAX PRESSURE (PSI)			
<b>12 inch'</b>												
145/80R12LT 6PR 80/78N 4.00B			145	537	450/425	992/937	350	50	72	C	E	
<b>13 inch'</b>												
155R13C	8PR	90/88Q 4.50B	157	578	600/560	1323/1235	450	65	72	C	E	
165R13C	8PR	94/93S 4.50B	167	596	670/650	1477/1433	450	65	72	C	E	
<b>14 inch'</b>												
165R14C	8PR	97/95S 4.5J	167	622	730/690	1609/1521	450	65	72	C	E	
175R14C	8PR	99/97 R 5.0J	178	634	775/730	1710/1610	450	65	72	C	E	
185R14C	8PR	102/100R 5.5J	188	650	850/800	1875/1765	450	65	72	C	E	
185R14C	6PR	97/95 R 5.5J	188	650	730/690	1610/1520	350	51	72	C	E	
195R14C	8PR	106/104R 5.5J	198	666	950/900	2095/1985	450	65	72	C	E	
195R14C(wsw)	8PR	106/104R 5.5J	198	666	950/900	2095/1985	450	65	72	C	E	
<b>15 inch'</b>												
195R15C	8PR	106/104R 5.5J	198	690	950/900	2095/1985	450	65	72	C	E	
195R15C (wsw)	8PR	106/104R 5.5J	198	690	950/900	2095/1985	450	65	72	C	E	
195/70R15C	8PR	104/102R 6J	201	655	900/850	1985/1875	450	65	72	C	E	
205/70R15C	8PR	106/104R 6J	209	669	950/900	2095/1985	450	65	72	C	E	
215R15C	8PR	111/109R 6J	218	724	1090/1030	2405/2270	450	65	72	C	E	
215/65R15C	6PR	104/102T 6.5J	221	661	900/850	1985/1875	375	55	72	C	E	
215/70R15C	8PR	109/107R 6.5J	221	683	1030/975	2270/2150	450	65	72	C	E	
225/70R15C	8PR	112/110R 6.5J	228	697	1120/1060	2470/2335	450	65	72	C	E	
225/70R15C (wsw)	8PR	112/110R 6.5J	228	697	1120/1060	2470/2335	450	65	72	C	E	
<b>16 inch'</b>												
185/75R16C	8PR	104/102R 5J	184	684	900/850	1985/1875	475	69	72	C	E	
195/60R16C	6PR	99/97 H 6J	201	640	775/730	1710/1610	375	55	72	C	E	
195/65R16C	8PR	104/102T 6J	201	660	900/850	1985/1875	475	69	72	C	E	
195/75R16C	8PR	107/105R 5.5J	196	698	975/925	2150/2040	475	69	72	C	E	
205/65R16C	8PR	107/105T 6J	209	672	975/925	2150/2040	475	69	72	C	E	
205/75R16C	8PR	110/108R 5.5J	203	714	1060/1000	2335/2205	475	69	72	C	E	
215/60R16C	6PR	103/101T 6.5J	221	664	875/825	1930/1820	375	55	72	C	E	
215/60R16C	8PR	108/106T 6.5J	221	664	1000/950	2205/2095	475	69	72	C	E	
215/65R16C	8PR	109/107T 6.5J	221	686	1030/975	2270/2150	475	69	72	C	E	
215/70R16C	6PR	108/106R 6.5J	221	708	1000/950	2205/2095	375	55	72	C	E	
215/75R16C	8PR	113/111R 6J	216	728	1150/1090	2535/2405	475	69	72	C	E	
225/65R16C	8PR	112/110T 6.5J	228	698	1120/1060	2470/2335	475	69	72	C	E	
235/65R16C	8PR	115/113T 7J	240	712	1215/1150	2680/2535	475	69	72	C	E	

TIRE SIZE	PR	LOAD INDEX/ SPEED SYMBOL	STD. RIM (inch)	SECTION WIDTH (mm)	OVERALL DIAMETER (mm)	MAX LOAD (KGS)	MAX LOAD (lbs)	MAX PRESSURE (PKa)	MAX PRESSURE (PSI)			
<b>13 inch'</b>												
ST175/80R13 6PR		91/87L	5J	177	610	615/545	1360/1200	350	50			
<b>14 inch'</b>												
ST205/70R14 6PR		100/96L	5.5J	203	664	800/710	1760/1570	350	50			
ST215/75R14 6PR		102/98L	6J	216	678	850/750	1870/1650	350	50			
<b>15 inch'</b>												
ST205/75R15 6PR		101/97L	5.5J	203	689	825/730	1820/1610	350	50			
ST205/75R15 8PR		107/102L	5.5J	203	689	975/850	2150/1870	450	65			
ST225/75R15 8PR		113/108L	6J	223	719	1150/1000	2540/2200	450	65			
ST225/75R15 10PR		117/112L	6J	223	719	1285/1120	2830/2470	550	80			
<b>16 inch'</b>												
ST235/80R16 10PR		123/119L	6.5J	235	782	1550/1360	3420/3000	550	80			
ST235/85R16 8PR		121/117L	6.5J	235	806	1450/1285	3200/2830	450	65			
ST235/85R16 10PR		125/121L	6.5J	235	806	1650/1450	3640/3200	550	80			



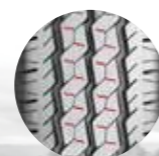
**TRAILER XT2**



Closed shoulder design provides superior lateral rigidity, traction and braking capacity.



zigzag design provides excellent grip.



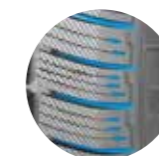
The middle big blocks pattern and shoulder transverse pattern increase control stability and running miles.



Three longitudinal grooves provide excellent draining performance.



Good grip on icy and snowy roads.



Wide double groove design helps avoid side slippage.





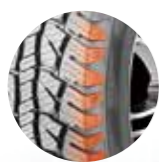
**X-TERRAIN XT1**

TIRE SIZE	LOAD INDEX/ SPEED SYMBOL	STD. RIM (inch)	SECTION WIDTH (mm)	OVERALL DIAMETER (mm)	MAX LOAD (KGS)	MAX LOAD (lbs)	MAX PRESSURE (PKa)	MAX PRESSURE (PSI)	🌀	🌀	🌀
<b>15 inch'</b>											
LT215/75R15	6PR 100/97 S	6J	216	703	800/730	1765/1610	350	51	72	B	E
LT225/75R15	6PR 102/99 S	6J	223	719	850/775	1875/1710	350	51	72	B	E
LT235/75R15	6PR 104/101R	6.5J	235	733	900/825	1985/1820	350	50	72	B	E
31X10.50R15LT	6PR 109 R	8.5J	268	775	1030	2270	350	50	72	A	E
<b>16 inch'</b>											
205R16C	8PR 110/108R	6J	208	736	1060/1000	2337/2205	450	65	72	B	E
LT215/85R16	10PRI15/112R	6J	216	772	1215/1120	2680/2470	550	80	72	B	E
LT225/75R16	10PRI15/112R	6J	223	744	1215/1120	2680/2470	550	80	72	B	E
235/70R16	106 T	7J	240	736	950	2094	350	51	71	C	E
LT235/85R16	10PRI20/116R	6.5J	235	806	1380/1260	3021/2778	550	80	72	B	E
245/70R16	107 T	7J	248	750	975	2149	350	51	71	C	E
LT245/75R16	10PRI20/116R	7J	248	774	1380/1260	3042/2778	550	80	72	B	E
265/70R16	112 T	8J	272	778	1120	2469	350	51	72	C	E
LT265/75R16	10PRI20/117R	7.5J	267	804	1400/1285	3085/2835	550	80	72	B	E
LT265/75R16	10PRI23/120R	7.5J	267	804	1550/1400	3415/3085	550	80	72	B	E
<b>17 inch'</b>											
265/65R17	112 T	8J	272	776	1120	2469	350	51	72	C	E
265/70R17	115 T	8J	272	804	1215	2679	350	51	72	C	E
<b>18 inch'</b>											
265/60R18	110 T	8J	272	775	1060	2337	350	51	72	C	E
<b>20 inch'</b>											
265/50R20	111T XL	8.5J	277	774	1090	2403	340	50	72	C	E

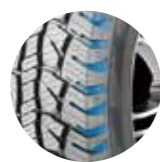
TIRE SIZE	PR	LOAD INDEX/ SPEED SYMBOL	STD. RIM (inch)	SECTION WIDTH (mm)	OVERALL DIAMETER (mm)	MAX LOAD (KGS)	MAX LOAD (lbs)	MAX PRESSURE (PKa)	MAX PRESSURE (PSI)
<b>16 inch'</b>									
7.00R16LT	12PR	115/110N 5.50F	200	775	1215/1060	2680/2335	670	97	
7.00R16LT	8PR	107/102N 5.50F	200	775	975/850	2150/1875	460	67	
7.00R16LT	6PR	101/96 N 5.50F	200	775	825/710	1820/1565	350	50	
7.50R16LT	14PR	122/118N 6.00G	215	805	1500/1320	3305/2910	770	112	
7.50R16LT	14PR	120/118N 6.00G	215	805	1400/1320	3085/2910	770	112	



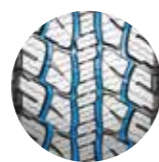
**X-TERRAIN XT3**



Strong carcass and convex sidewall design ensures superior wear resistance



Wide open shoulder design provides superior lateral rigidity, traction and braking capacity



Four curved grooves increase grip and self-cleaning capacity on irregular road conditions such as mud and gravel



Zigzag sheet steel provides excellent ground grasping and driving comfort



Optimized wet and dry performance, highly efficient in preventing side wear, and longer mileage.



Strengthened tire structure and reinforced carcass ensure greater load capacity.





**ARCTIC XS1**

TIRE SIZE	LOAD INDEX/ SPEED SYMBOL	STD. RIM (inch)	SECTION WIDTH (mm)	OVERALL DIAMETER (mm)	MAX LOAD (KGS)	MAX LOAD (lbs)	MAX PRESSURE (PKa)	MAX PRESSURE (PSI)			
<b>13 inch'</b>											
165/70R13	79T	5.00B	170	562	437	963	300	44	71	E	E
<b>14 inch'</b>											
175/70R14	84T	5J	177	602	500	1102	300	44	71	E	E
185/70R14	88T	5.5J	189	616	560	1235	300	44	71	E	E
195/60R14	86T	6J	201	590	530	1168	300	44	72	E	E
175R14LT	99/97R	5J	177	636	775/730	1710/1610	450	65	72	E	C
185R14LT	102/100R	5.5J	189	652	850/800	1875/1765	450	65	72	E	C
<b>15 inch'</b>											
195/60R15	88T	6J	201	615	560	1235	300	44	72	E	E
195/65R15	91T	6J	201	635	615	1356	300	44	72	E	E
205/70R15	96S	6J	209	669	710	1565	300	44	72	E	C
215/75R15	100S	6J	216	703	800	1764	300	44	72	E	C
235/75R15	105S	6.5J	235	733	925	2039	350	51	72	E	C
<b>16 inch'</b>											
195/60R16	89T	6J	201	640	580	1279	300	44	72	E	E
205/55R16	91H	6.5J	214	632	615	1356	300	44	72	E	C
215/70R16	100S	6.5J	221	708	800	1764	350	51	72	E	C
235/70R16	106S	7J	240	736	950	2094	350	51	72	E	C
<b>17 inch'</b>											
225/45R17	94H XL	7.5J	225	634	670	1477	340	50	72	E	C

TIRE SIZE	LOAD INDEX/ SPEED SYMBOL	STD. RIM (inch)	SECTION WIDTH (mm)	OVERALL DIAMETER (mm)	MAX LOAD (KGS)	MAX LOAD (lbs)	MAX PRESSURE (PKa)	MAX PRESSURE (PSI)			
<b>13 inch'</b>											
175/70R13	82T	5J	177	576	475	1047	300	44	71	C	E
<b>14 inch'</b>											
175/65R14	82T	5J	177	584	475	1047	300	44	71	C	E
185/60R14	82T	5.5J	189	578	475	1047	300	44	71	C	E
185/65R14	86T	5.5J	189	596	530	1168	300	44	71	C	E
<b>15 inch'</b>											
185/60R15	84T	5.5J	189	603	500	1102	300	44	71	C	E
185/65R15	88T	5.5J	189	621	560	1235	300	44	71	C	E
195/55R15	85H	6J	201	595	515	1135	300	44	72	C	E
195/60R15	88H	6J	201	615	560	1235	300	44	72	C	E
195/65R15	91T	6J	201	635	615	1356	300	44	72	C	E
205/65R15	94H	6J	209	647	670	1477	300	44	72	C	E
225/70R15C8PR	112/110R	6.5J	228	697	1120/1060	2470/2335	450	65	73	B	E
<b>16 inch'</b>											
205/55R16	91H	6.5J	214	632	615	1356	300	44	72	C	C
205/60R16	92H	6J	209	652	630	1389	300	44	72	C	C
215/55R16	97H XL	7J	226	642	730	1609	340	50	72	C	C
215/60R16	99H XL	6.5J	221	664	775	1709	340	50	72	C	C
<b>17 inch'</b>											
225/45R17	94H XL	7.5J	225	634	670	1477	340	50	72	C	C



**ARCTIC S3**



Four longitudinal grooves improve draining performance and grip capacity on snow



Asymmetric tread design improves cornering manoeuvrability.



High density and uniform distribution on silica nanoparticles provides a silent ride with the best ride comfort.



3D sheet steel design provides excellent ground grasping capacity on ice and snow



Reinforced center rib ensures better handling and high speed performance. Multiple sipes enhance grip and braking force in snow and ice.



Gradually widening lateral grooves and zigged longitudinal grooves improve self-cleaning and draning capabilities.





TIRE SIZE	LOAD INDEX/ SPEED SYMBOL	STD. RIM (inch)	SECTION WIDTH (mm)	OVERALL DIAMETER (mm)	MAX LOAD (KGS)	(lbs)	MAX PRESSURE (PKa)	(PSI)			
<b>13 inch'</b>											
175/70R13	82T	5.00B	177	576	475	1047	300	44	71	C	E
<b>14 inch'</b>											
155/65R14	75T	4.5J	157	558	387	853	300	44	71	C	E
165/70R14	81T	5J	170	588	462	1019	300	44	71	C	E
175/65R14	82T	5J	177	584	475	1047	300	44	71	C	E
185/60R14	82T	5.5J	189	578	475	1047	300	44	71	C	E
185/65R14	86T	5.5J	189	596	530	1168	300	44	71	C	E
<b>15 inch'</b>											
175/65R15	84T	5J	177	609	500	1102	300	44	71	C	E
185/55R15	86H XL	6J	194	585	530	1168	340	50	71	C	E
185/60R15	84T	5.5J	189	603	500	1102	300	44	71	C	E
185/65R15	88T	5.5J	189	621	560	1235	300	44	71	C	E
195/50R15	86H XL	6J	201	577	530	1168	340	50	72	C	E
195/55R15	85H	6J	201	595	515	1135	300	44	72	C	E
195/60R15	88H	6J	201	615	560	1235	300	44	72	C	E
195/65R15	91T	6J	201	635	615	1356	300	44	72	C	E
205/65R15	94H	6J	209	647	670	1477	300	44	72	C	E
195/70R15C 8PR104/102 R	6J	201	655	900/850	1985/1875	450	65	73	B	E	
215/70R15C 8PR109/107 R	6.5J	221	683	1030/975	2270/2150	450	65	73	B	E	
225/70R15C 8PR112/110 R	6.5J	228	697	1120/1060	2470/2335	450	65	73	B	E	
<b>16 inch'</b>											
195/55R16	91H XL	6J	201	620	615	1356	340	50	72	C	E
205/55R16	91H	6.5J	214	632	615	1356	300	44	72	C	C
205/60R16	92H	6J	209	652	630	1389	300	44	72	C	C
215/55R16	97H XL	7J	226	642	730	1609	340	50	72	C	C
215/60R16	99H XL	6.5J	221	664	775	1709	340	50	72	C	C
215/65R16	98H	6.5J	221	686	750	1653	300	44	72	C	C
195/65R16C 8PR 104/102 R	6J	201	660	900/850	1985/1875	475	69	73	B	E	
195/75R16C 8PR 107/105 R	5.5J	196	698	975/925	2150/2040	475	69	73	B	E	
205/65R16C 8PR 107/105 R	6J	209	672	975/925	2150/2040	475	69	73	B	E	
215/65R16C 8PR 109/107 R	6.5J	221	686	1030/975	2270/2150	475	69	73	B	E	
235/65R16C 8PR 115/113 R	7J	240	712	1215/1150	2680/2535	475	69	73	B	E	
<b>17 inch'</b>											
205/50R17	93H XL	6.5J	214	638	650	1433	340	50	72	C	C
225/45R17	94H XL	7.5J	225	634	670	1477	340	50	72	C	C
225/50R17	98H XL	7J	233	658	750	1653	340	50	72	C	C
225/55R17	101H XL	7J	233	680	825	1819	340	50	72	C	C

TIRE SIZE	LOAD INDEX/ SPEED SYMBOL	STD. RIM (inch)	SECTION WIDTH (mm)	OVERALL DIAMETER (mm)	MAX LOAD (KGS)	(lbs)	MAX PRESSURE (PKa)	(PSI)			
<b>17 inch'</b>											
215/45R17	91H XL	7J	213	626	615	1356	340	50	72	E	E
215/50R17	95H XL	7J	226	648	690	1521	340	50	72	E	E
215/55R17	98T XL	7J	226	668	750	1653	340	50	72	E	E
235/55R17	99S	7.5J	245	690	775	1709	300	44	72	E	E
<b>18 inch'</b>											
225/45R18	95S XL	7.5J	225	659	690	1521	340	50	72	E	E
225/50R18	99T XL	7J	233	683	775	1709	340	50	72	E	E
235/45R18	98S XL	8J	236	669	750	1653	340	50	72	E	E
245/45R18	96S	8J	243	677	710	1565	300	44	72	E	E
<b>19 inch'</b>											
255/40R19	100T XL	9J	260	687	800	1764	340	50	71	E	E
<b>20 inch'</b>											
255/50R20	109S XL	8J	265	764	1030	2271	340	50	73	E	E



**ARCTIC S6**



Tiny grooves absorb and store water which is dispersed on the surface of the ice to enhance grip.



**ARCTIC S-8**



Upgraded silica compound ensures the tread maintains its softness in low temperatures to provide first-class safety. Lateral serrated sipe design on tread improves skid resistance.



Asymmetric pattern and three main grooves provide great maneuverability. Tread Design





**ARCTIC S-9**

TIRE SIZE	LOAD INDEX/ SPEED SYMBOL	STD. RIM (inch)	SECTION WIDTH (mm)	OVERALL DIAMETER (mm)	MAX LOAD (KGS)	MAX PRESSURE (lbs)	MAX PRESSURE (PKa)	MAX PRESSURE (PSI)	
<b>16 inch</b>									
215/75R16LT8PR	107/103R	6J	216	728	975/875	2150/1930	450	65	72 E E
265/70R16	112T	8J	272	778	1120	2469	300	44	73 E E
<b>17 inch</b>									
215/60R17	96S	6.5J	221	690	710	1565	300	44	72 E E
225/60R17	99S	6.5J	228	702	775	1709	300	44	72 E E
225/65R17	102S	6.5J	228	724	850	1874	300	44	72 E E
235/65R17	104T	7J	240	738	900	1984	300	44	72 E E
265/65R17	112S	8J	272	776	1120	2469	300	44	73 E E
<b>18 inch</b>									
215/55R18	99H XL	7J	226	693	775	1709	340	50	72 E E
225/55R18	98T	7J	233	705	750	1653	300	44	72 E E
225/60R18	100S	6.5J	228	727	800	1764	300	44	72 E E
235/50R18	101T XL	7.5J	245	693	825	1819	340	50	72 E E
235/55R18	100T	7.5J	245	715	800	1764	300	44	72 E E
235/60R18	107S XL	7J	240	739	975	2149	340	50	72 E E
245/60R18	105T	7J	248	751	925	2039	300	44	72 E E
285/60R18	116R	8.5J	292	799	1250	2756	300	44	75 E E
<b>19 inch</b>									
225/45R19	96T XL	7.5J	225	685	710	1565	340	50	72 E E
235/55R19	105T XL	7.5J	245	741	925	2039	340	50	72 E E
245/55R19	103T	7.5J	253	753	875	1929	300	44	72 E E
<b>20 inch</b>									
285/50R20	112S	9J	297	794	1120	2469	300	44	73 E E



Tiny grooves absorb and store water which is dispersed on the surface of the ice to enhance grip.



The sipe design improves the tire's rigidity which reduces the possibility of deformation while driving. This makes driving more comfortable and braking at high speeds more stable.